

Darfon believes in creating solar power solutions that are efficient, dependable, and user friendly. With that in mind, the MIG300 micro inverter was designed to be easy to handle and install. It has a maximum input power rating of 300W, making it compatible with a wide range of solar modules.



## SPECIFICATIONS

INPUT DATA (DC)	
Recommended STC Module Input Power Rating	Up to 300W
Nominal Input Power	300W
Maximum Input DC Voltage	60V
Peak Power Tracking Voltage	24 - 40V
Minimum Start Voltage	24V
Maximum DC Short Circuit Current	12A
Maximum Input Current	10A
OUTPUT DATA (AC)	
Continuous Output Power	250W
Peak Output Power	260W
Nominal Output Current	1.04A
Nominal Voltage / Range	240 / 211 - 264V
Nominal Frequency / Range	60 / 59.3 - 60.5 Hz *
Power Factor	>0.95
Maximum Units per Branch Circuit (Single Phase)	20A Branch Circuit: 16 Units 30A Branch Circuit: 24 Units
EFFICIENCY	
Peak Inverter Efficiency	95.8%
CEC Weighted Efficiency	95%
Nominal MPP Tracking	>99%
Night Time Power Consumption	< 89mW
MECHANICAL DATA	
Ambient Temperature Range	-40°C to 65°C
Operating Temperature Range (Internal)	-40°C to 85°C
Dimensions (WxHxD)	8.7 x 5.1 x 1.5 in (220 x 130 x 37mm)
Weight	5.5 lbs (2.5 kg)
Cooling	Natural Convection - No Fans
Enclosure Environmental Rating	Outdoor - NEMA 6
FEATURES	
Communication	Powerline
Compliance	EN 61000-6-2, EN 61000-6-3, FCC Part15 Class B, UL 1741, IEEE 1547

### IMPROVED SAFETY

- Eliminates the need for high voltage DC wiring

### FLEXIBLE PV ARRAY DESIGN

- Integrated grounding eliminates the need for additional GEC
- Up to 24 units per 30A branch circuit
- Scalable for future expansion

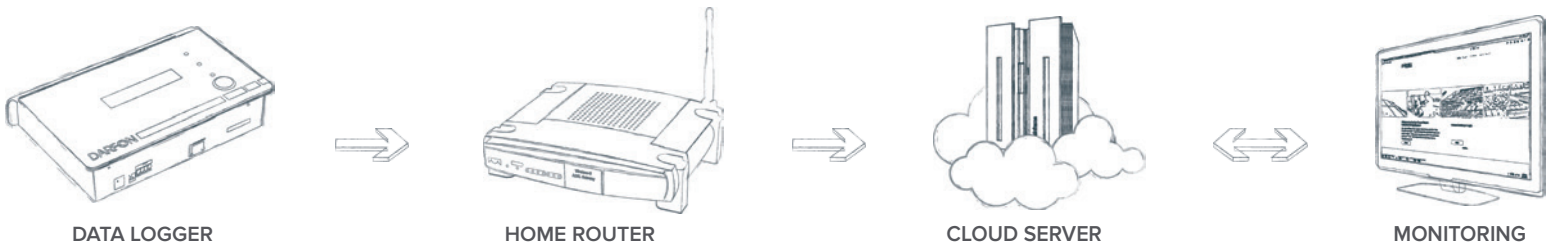
### MAXIMIZED ENERGY PRODUCTION

- Debris/shading does not impact energy production for the entire PV array
- Real-time cloud-based monitoring through web browsers and mobile apps

### RELIABLE

- Fully potted design for better heat dissipation
- 25-year\*\* limited warranty

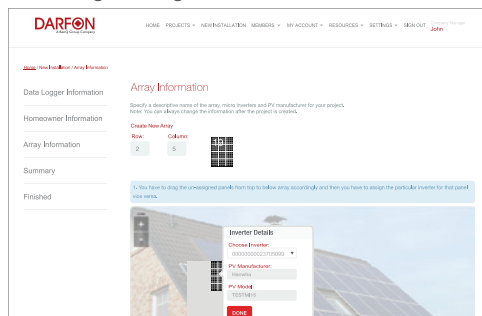
**FOR MORE INFORMATION, VISIT/CONTACT US AT**  
web: [www.darfonsolar.com](http://www.darfonsolar.com) email: [pvsales@darfon.com](mailto:pvsales@darfon.com)



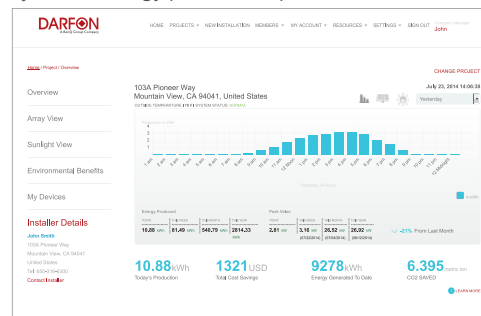
With the Darfon monitoring system, each panel/micro inverter can be examined so potential issues can be located and resolved. The system auto-detects the installed micro inverter, making set-up simple and easy.

With Darfon's cloud-based monitoring system, real-time information is available on mobile devices via apps for Android® or iOS®.

**Easy Setup:** Drag & drop PV panels to create arrays, then assign auto-generated inverter serial number.



**Graph View (Homeowner):** An overview of the PV system's energy production/performance.



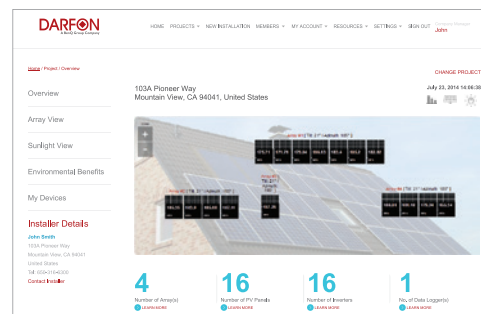
**Project List:** Manage and monitor the performance of your PV projects.

Project Name	Location	Installed By	Status	Energy Produced
June 16, 2014	144 Pine Street, Fremont, CA 94538, United States	John Smith	Active	0.715 kWh
June 03, 2014	103A Pioneer Way, Mountain View, CA 94041, United States	John Smith	Active	0.200 kWh
May 18, 2014	2030 2nd Street, Davis, CA 95618, United States	John Smith	Active	13.380 kWh
April 15, 2014	1227 Chestnut Hill, Berkeley, CA 94702, United States	John Smith	Active	17.883 kWh
April 10, 2014	2000 Van Street, Davis, CA 95618, United States	John Smith	Active	10.443 kWh

**Installer/Manager List:** Manage employee access permissions & monitor your installers PV systems.

ID	Name	Role	Status	Date Added
1	John Smith	Manager	Active	January 20, 2014
2	Nick Carter	Installer	Active	January 20, 2014
3	Mick Tate	Manager	Active	February 21, 2014
4	James Manning	Installer	Active	May 20, 2014
5	David Moore	Installer	Active	June 12, 2014

**Array View:** Easily manage all your Darfon micro inverter installations.



**Map View:** Displays the locations of the company's installed PV systems.

